

FOR IMMEDIATE RELEASE

**ISABELLA
STEWART GARDNER
MUSEUM**

**This Summer and Fall 2009,
Contemporary Art is On View at the Gardner**

Artists Su-Mei Tse and Taro Shinoda Present New Works—Combining the Influences of Music, Lunar Reflections, and Asia—in a Pair of Special Exhibitions at the Isabella Stewart Gardner Museum, Boston

BOSTON, June 30, 2009 • During their residencies at the Isabella Stewart Gardner Museum in Boston, artists **Su-Mei Tse** and **Taro Shinoda** independently drew inspiration from the historic collection and unique atmosphere of the century-plus-old museum: the reflection of the moonlight through the glass canopy of the interior courtyard garden, the musical rhythms wafting through the galleries during a concert, and the many Asian objects and influences on view daily in the historic galleries, created and left to the public—and to future artists—over a century ago by Isabella Stewart Gardner as a place for the muses to fire the imagination and inspire artistic creativity and appreciation.

In the summer and fall 2009, Tse and Shinoda return to present new works at the Isabella Stewart Gardner Museum with a pair of contemporary exhibitions—presented as part of the museum’s esteemed *Artists-in-Residence* program. Continuing Isabella Gardner’s rich legacy of patronage for living artists, the program also offers artists, curators, scholars, and the general public opportunities to view and learn from contemporary artists’ perspectives on the historic collection and Isabella Gardner’s ongoing inspiration. These artists represent the museum’s latest *Artists-in-Residence* and related exhibitions since the program’s creation over seventeen years ago.

“SU-MEI TSE: FLOATING MEMORIES”

On view July 16 to October 18, 2009 | Advance Press Preview Event • Wednesday, July 15, 9:00 AM



*Image: Su-Mei Tse, Floating Memories, 2009
Photo by Jean-Lou Majerus*

In summer 2009, Gardner Museum *Artist-in-Residence* Su-Mei Tse returns to the museum to present a contemporary exhibition of new work. The exhibition is the Tse’s first solo exhibition in the U.S.

Su-Mei Tse is a visual artist who works in a wide range of media, including photography, sculpture, video, and installation. Informed by her background as a classically-trained cellist, Tse frequently explores issues of rhythm, music, and movement in her work, translating musical ideas into a spatial dimension through a multitude of diverse media. Tse’s work also often examines visual and auditory perception, while considering the fragility and recurring aspects of human existence.

Tse’s understated films, paintings and sound installations have been compared to *haiku* poetry for their elegant and spartan imagery, often posing the question: What might be a universal language?

Su-Mei Tse’s upcoming exhibition at the Gardner Museum is the artist’s first solo U.S. exhibition. Tse recently presented her first solo show in Japan, at Art Tower Mito, on view from February 7 to May 10, 2009 and including video installations, sculptures and photography.

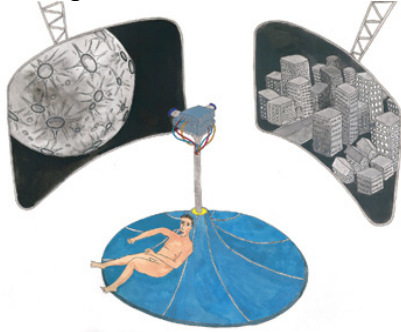
SU-MEI TSE • Born in Luxemburg in 1973 to a Chinese violinist and an English pianist, visual artist Su-Mei Tse currently resides in Luxemburg and Paris. In 2003, she represented Luxemburg at the 50th Venice Biennale and won the Golden Lion award for Best National Participation. Her work has been shown in New York at P.S.1 Contemporary Art Center and the Peter Blum Gallery; London at the Albion Gallery; Roskilde, Denmark at the Museet for Samtidskunst; Chicago at The Renaissance Society; Stockholm at the Moderna Museet; Seattle at the Seattle Art Museum; Athens at the Alpha Delta Gallery; Antwerp at the Tim Van Laere Gallery; Taiwan at MOCA Taipei; Amsterdam at the Foundation De Appel; Jerusalem at the Israel Museum; Paris at the Centre Culturel Suisse; and San Francisco at the Wattis Institute for Contemporary Arts. A major exhibition of her work was recently presented at Casino Luxembourg Forum d'Art Contemporain.

Tse has been an artist-in-residence at the International Studio and Curatorial Program (ISCP) in New York; the Isabella Stewart Gardner Museum in Boston; Massachusetts Institute of Technology (MIT) in Cambridge; and Acadia Summer Art Program in Bar Harbor, Maine. Her numerous honors and awards – in addition to the Golden Lion – include the SR-Medienkunstpreis given by the Saarlandischer Rudfunk as well as the Prix d'art Robert Schumann. In 2005, Tse became the first recipient of the Edward Steichen Award, earning a grant for a six-month artist's residency in New York City.

“TARO SHINODA: AN ARTIST-IN-RESIDENCE EXHIBITION”

November 5, 2009 to January 18, 2010 • Advance Press Preview Event: Wednesday, November 4, 9:30 AM

In fall 2009, Japanese conceptual artist Taro Shinoda also returns to the Gardner to present a new body of work—presented as part of the artist's **Lunar Reflection Transmission Technique (LRTT)** series, which he conceived while watching dawn rise in the Gardner Museum courtyard during his residency in spring 2007.



TARO SHINODA ▪ *Shinoda is a Japanese conceptual artist whose work, often linked to landscapes, engages themes of desire, meditation, and adaptation. A self-taught artist whose broad base of knowledge and interest encompasses natural sciences, engineering, architecture, and landscaping, Shinoda conjures machines that not only approximate nature but create whole microcosmoses in and around themselves. A recent Los Angeles exhibition was described as “Zen simplicity meets corporate efficiency” by the Los Angeles Times.*

Image, left: Taro Shinoda, Drawing for Lunar Reflection Transmission Technique (LRTT), 2007 | This image is representative of his work; it will not included in the Gardner exhibition.

A man-made attempt to represent the universe through an ideal landscape, the traditional Japanese garden is a recurring theme in Shinoda's work and stems from a lifelong interest: in his youth Shinoda attended a special high school to learn how to create and tend to these gardens. During a three-month residency in Los Angeles, Shinoda constructed a trailer based on an engawa, the traditional viewing platform that separates architecture, or the domestic space, from the garden. With his engawa in tow, the artist traveled to the Navajo Nation, up the Pacific coast past Big Sur, and east to Yosemite National Park, in an effort to consider how the landscape might direct man's relationship to nature in the future. Shinoda's work has been shown in Korea at the Busan Biennale; Turkey at the Istanbul Biennial; Limerick, Ireland at the EV+A festival; Los Angeles at the Roy and Edna Disney Calarts Theater; Tokyo at the Mori Art Museum; San Francisco at the Yerba Buena Center for the Arts; Lithuania at the Baltic Triennale; and Yokohama, Japan, at the International Triennale of Contemporary Art. He has been an artist-in-residence at REDCAT in Los Angeles and the Isabella Stewart Gardner Museum in Boston. Taro Shinoda was born in Tokyo, where he continues to live and work.

CONTEMPORARY ART AT THE GARDNER • “ARTISTS-IN-RESIDENCE” PROGRAM • The Isabella Stewart Gardner Museum remains a vibrant, dynamic center for the contemporary arts through an *Artists-in-Residence* program, unique among residency programs with its emphasis on the historic collection and museum's legacy as inspiration for new thinking. Created in 1992 by museum director Anne Hawley to revitalize creative thinking in the museum's galleries and directed by *Curator of Contemporary Art Pieranna Cavalehini*, the *Artists-in-Residence* program supports artists' needs for contemplation and an engaging environment. Visiting artists—painters, photographers, sculptors, composers, installation and performance artists, storytellers and writers—live at and explore the Isabella Stewart Gardner Museum, responding to its intimate installations, architectural beauty, musical and horticultural riches and archival histories to inspire creative thinking, artistic exploration and, often, ideas for new work. The museum has welcomed more than 60 artists to the museum since the program's creation and continues Isabella Gardner's rich legacy of patronage.

The Artist-in-Residence program is made possible, in part, by the Nimoy Foundation and generous individuals. The Gardner Museum receives operating support from the Massachusetts Cultural Council.

ISABELLA STEWART GARDNER MUSEUM • 280 The Fenway Boston MA 02115 • Tue.-Sun., 11 am-5 pm • General and “After Hours” admission: Adults \$12; Seniors \$10; Students \$5; Free for members, children under 18 and all named “Isabella” • \$2 off admission with a same-day Museum of Fine Arts, Boston • Info Line: 617.566.1401 • Box Office: 617 278 5156 • www.gardnermuseum.org • Modeled after a 15th-century Venetian palazzo surrounding a courtyard garden, the Gardner houses one of the most remarkable art collections in the world, featuring works by Rembrandt, Michelangelo, Raphael, Degas, and Sargent. Visit us online to learn more about our special exhibitions, concerts and evening programs.

#####

MEDIA CONTACT: Katherine Armstrong Public Relations Director, work 617.278.5107, cell 617.956.2565, karmstrong@isgm.org